

Access TestNav on your Home Computer or Device

Parents can access TestNav for remote test delivery using instructions provided by their children's schools. Schools direct students to access TestNav remote delivery either through browser-based TestNav (see below) or by [using a TestNav app](#) specific to each operating system (OS).

Access browser-based TestNav

Schools directing students to use a browser for remote testing should have previously communicated this information to parents and students. If you have received this communication, have your student follow the steps below to access TestNav.

1

Check your email for instructions from the teacher. *Students may receive two separate emails—one with the URL and another with their unique username and password.*

2

Click the URL provided within the email to open the **TestNav** Sign-In page.

3

Click or tap the user dropdown on the top-right and select **Browser Check**.

TestNav
Reference

Username

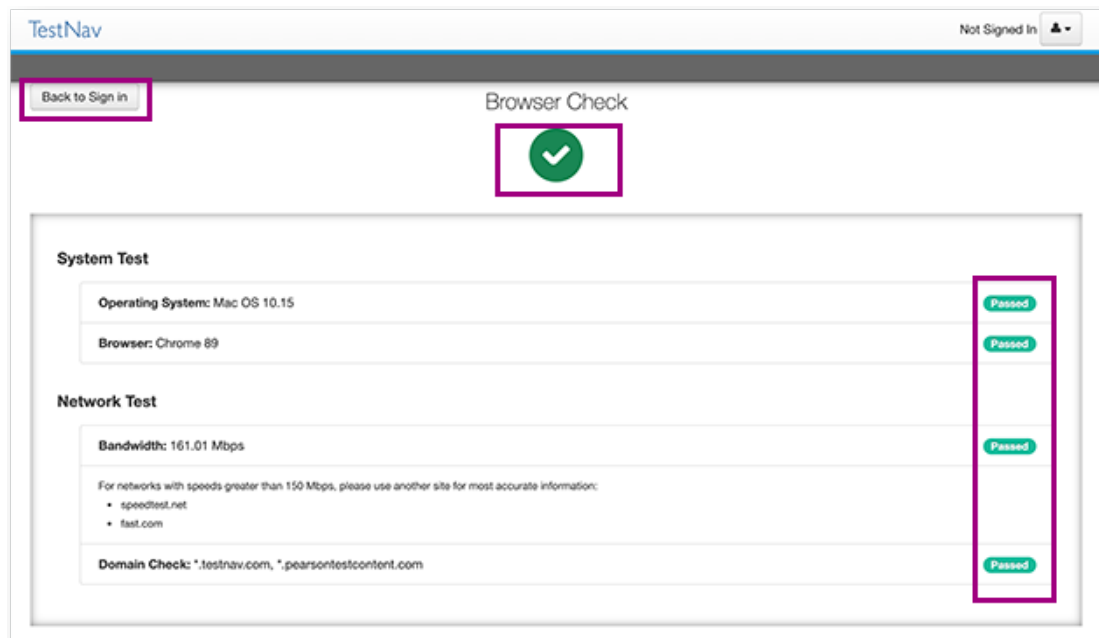
Password

Sign In

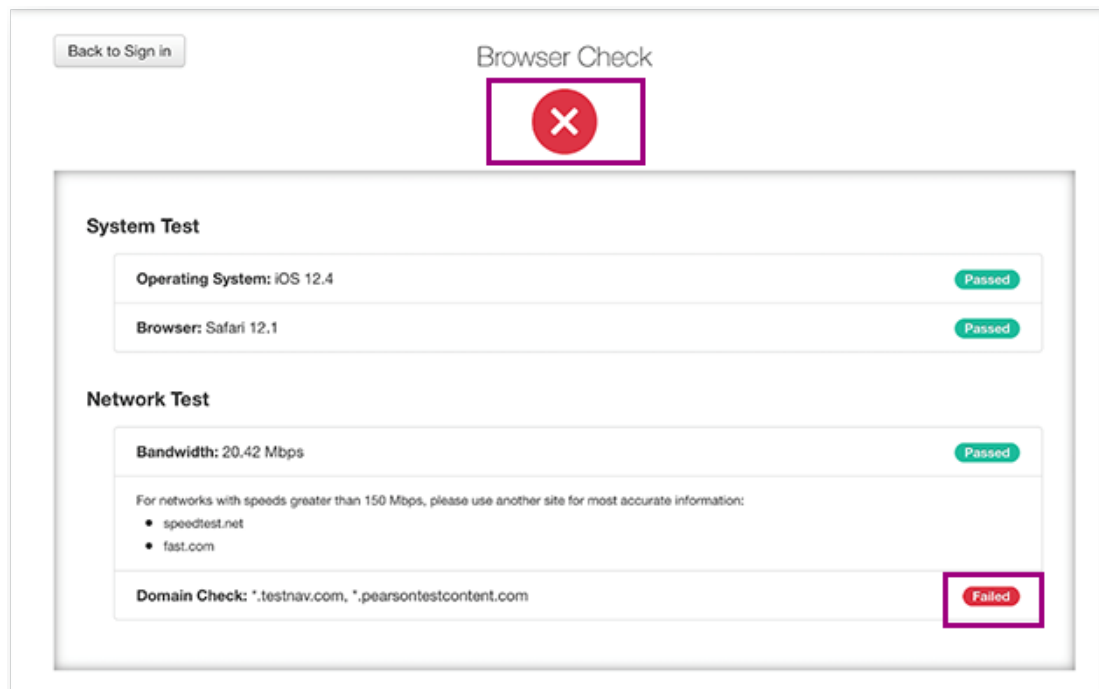
Test Audio

Browser Check

If your browser passes the **Browser Check**, the green checkmark appears at the top, and **Passed** icons appear next to each test. Click **Back to Sign In** to continue to sign in to your test.

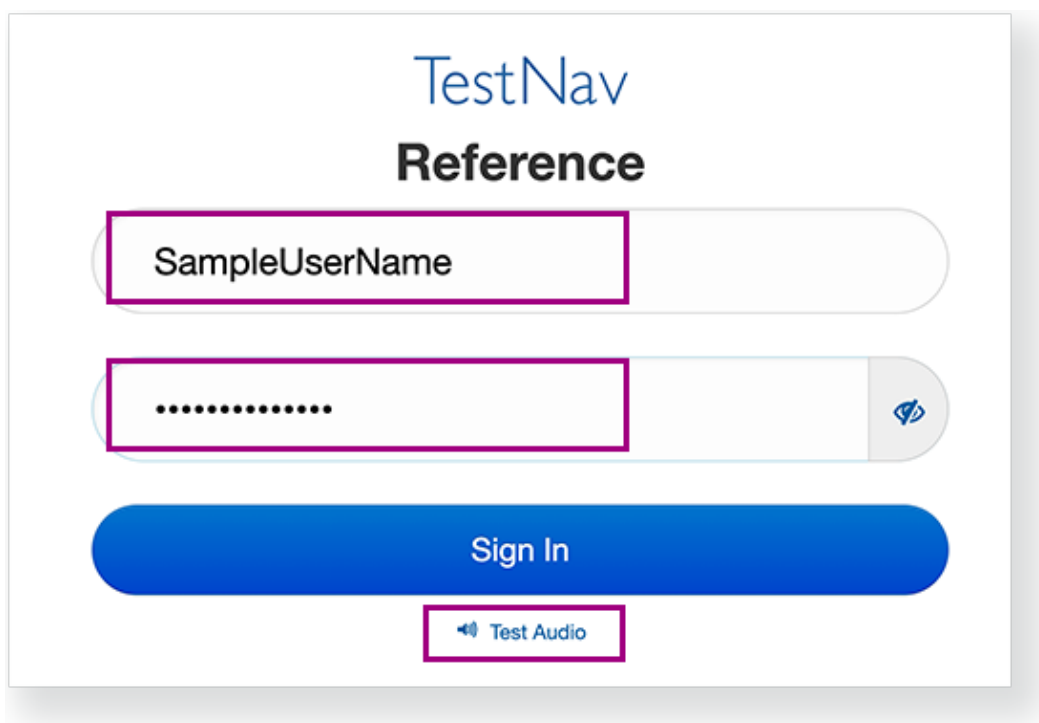


If your browser fails the Browser Check, a red X icon appears at the top and a **Failed** icon appears next to the test that failed. Try opening the URL in another browser. Repeat Step 3 and notify your teacher if **Browser Check** fails again.



4

Click **Test Audio** to make sure that your audio is on, and turn the volume up or down as you prefer. Then, enter the username and password that the teacher sent to you, and click **Sign In**.



5

Follow any other instructions that your teacher provided about using chat and/or video to ask questions during your test.

Access TestNav using the TestNav app

Parents should follow the instructions in the tabs below to install TestNav *only when directed to do so by their children's schools*.

For high-stakes/summative testing, devices must be managed by school/district IT for TestNav installation.

Parents, click the tab for the type of computer or device on which you want to install TestNav. If you have questions, please notify your child's teacher so that he or she can contact school or district technology support.

Mac

Install TestNav

1

Click the **OSX/macOS** button on the [TestNav Downloads](#) page.

Downloads

TestNav for Mac

An engaging and interactive testing experience for today's students, who learn and play in a digital environment.

[Read important installation details](#) before downloading.

OS X/macOS


[Download TestNav for another platform](#)

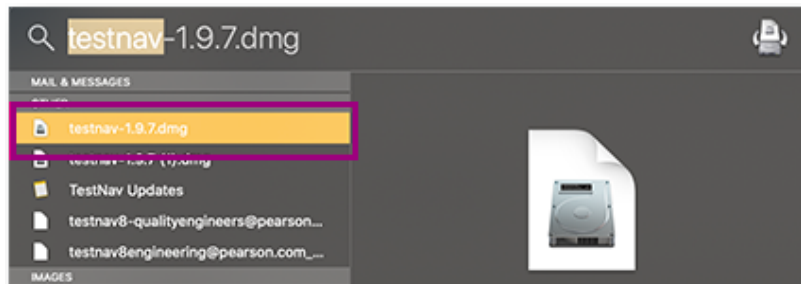
[System Requirements](#)



© Pearson Education, Inc. or its affiliate(s). All rights reserved. [Privacy Policy](#)

2

Click the Spotlight icon () at the top-right of the screen and type TestNav to find your downloaded .dmg file.

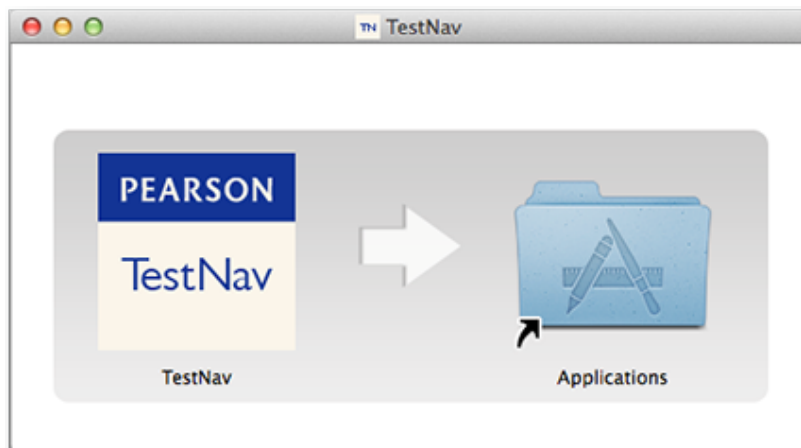


3

Double-click the .dmg file (for example, testnav-1.9.7.dmg), and the **TestNav** install window appears.

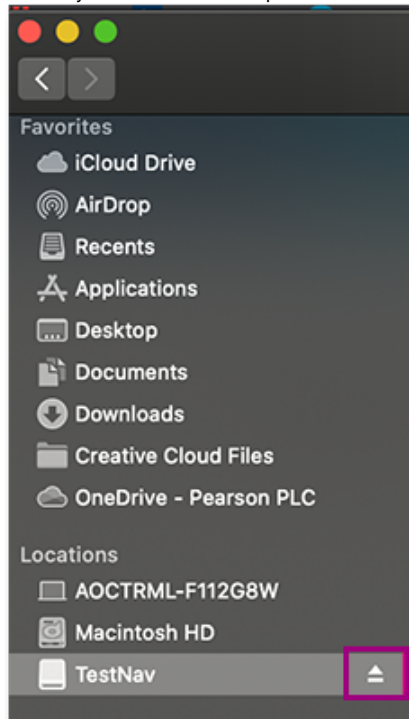
4

Drag the **TestNav** icon into the **Applications** folder.



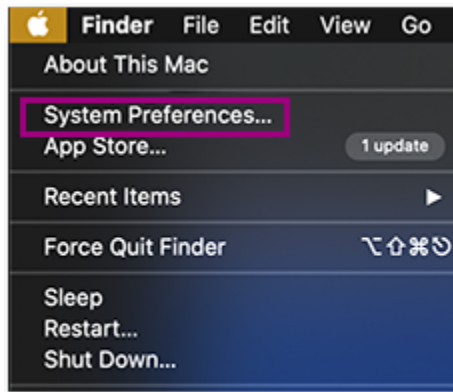
5

Click anywhere on the desktop and click **File > New Finder Window**. In the sidebar, click the eject icon (shown below).



6

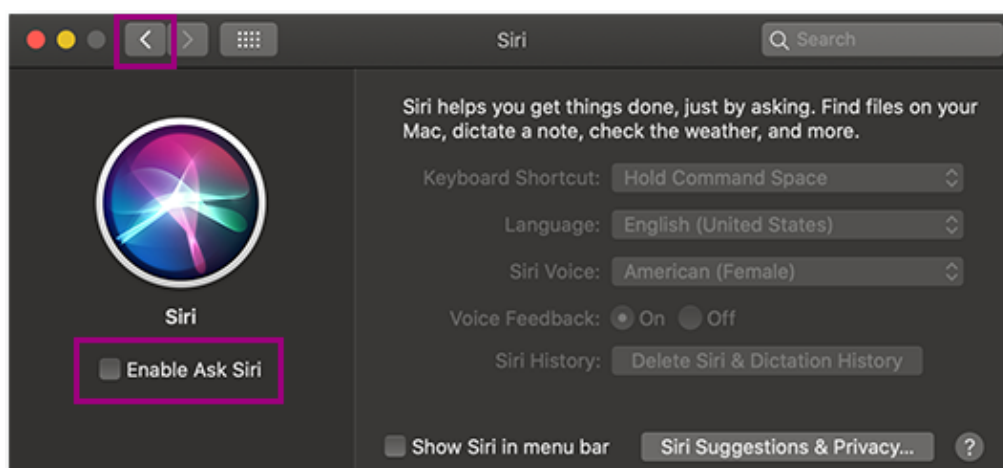
Click the Apple icon and select **System Preferences**.



a. Click **Siri**.



b. Deselect the **Enable Ask Siri** checkbox, and click the back arrow.



c. Click **Keyboard**.



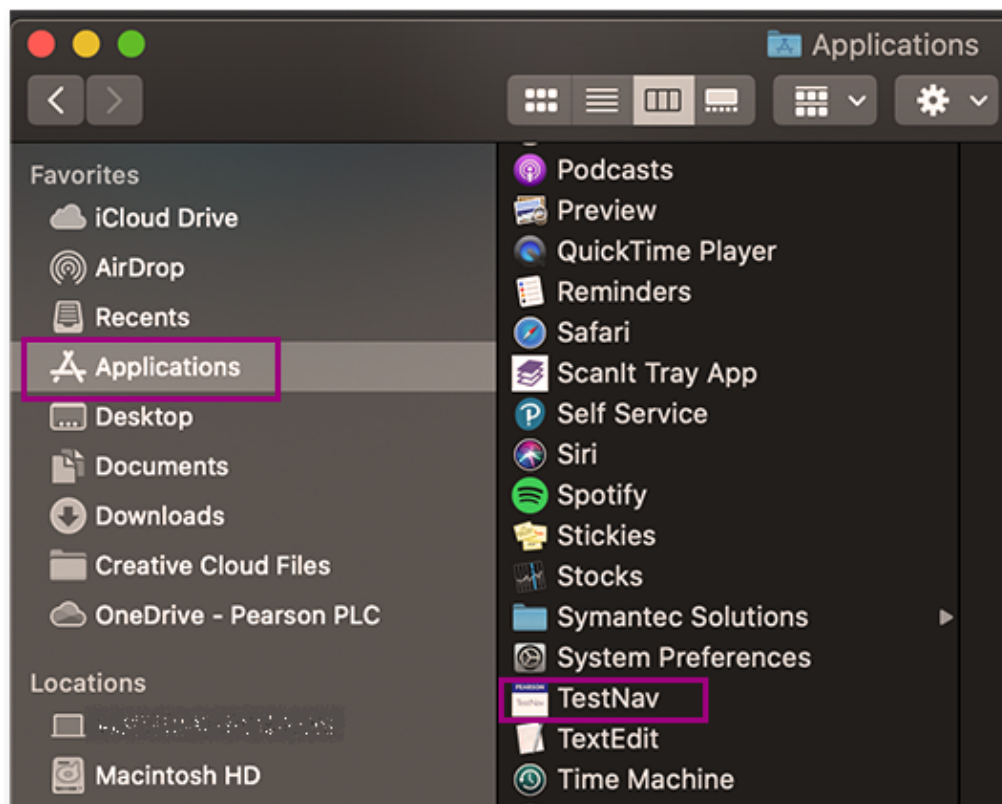
d. Click **Dictation**, and select **Off**.



Sign in to TestNav

1

Click **Applications** and double-click **TestNav**.



2

Click a button on the **TestNav** home page, as directed by your proctor.



3

Have the student enter the **Username** and **Password**, and click **Sign In**.

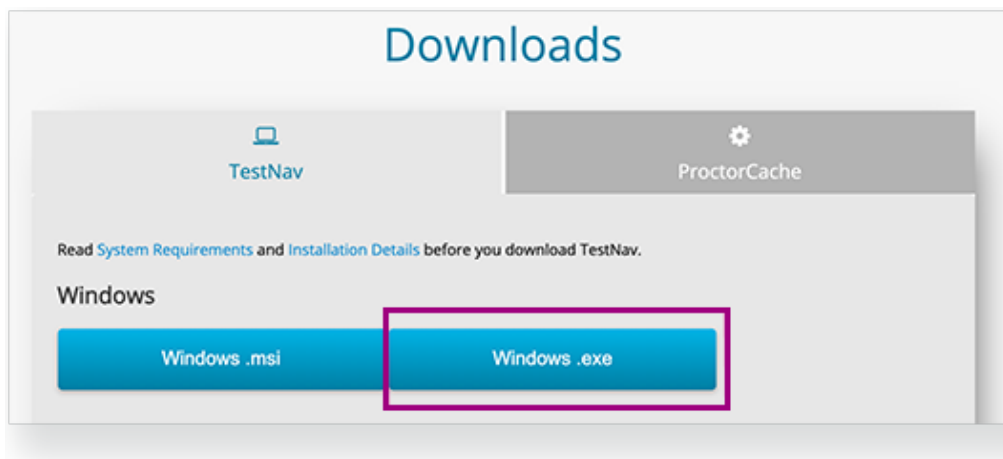
The login page for the Sample District Test on TestNav. It features the TestNav logo and the title "Sample District Test". Below the title are two input fields: "Username" and "Password". The "Password" field has a toggle icon (an eye) to the right of it. Below the input fields is a large blue button labeled "Sign In". At the bottom of the page, there is a small icon of a speaker and the text "Test Audio".

Windows

Install TestNav

1

Click **Windows.exe** button on the [TestNav Downloads](#) page:



2

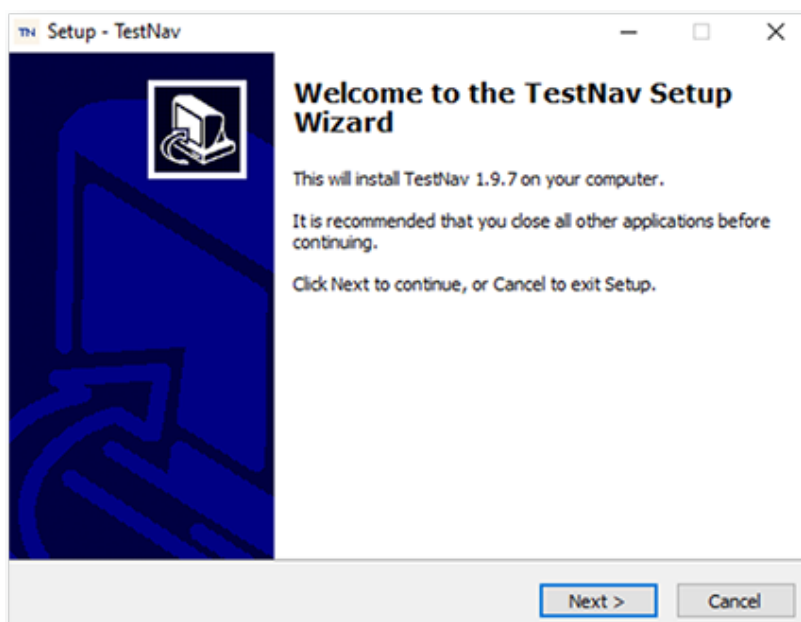
Double-click the TestNav testnav-1.9.x.exe file.

3

The **Setup - TestNav** window appears and asks if you want to continue installing TestNav. Click **Yes**.

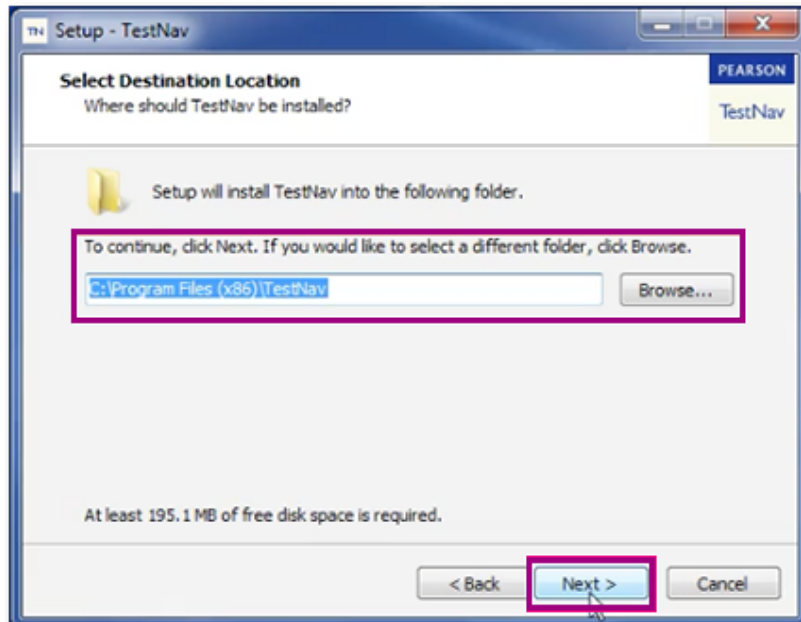
4

The **TestNav Setup** wizard appears. Click **Next**.



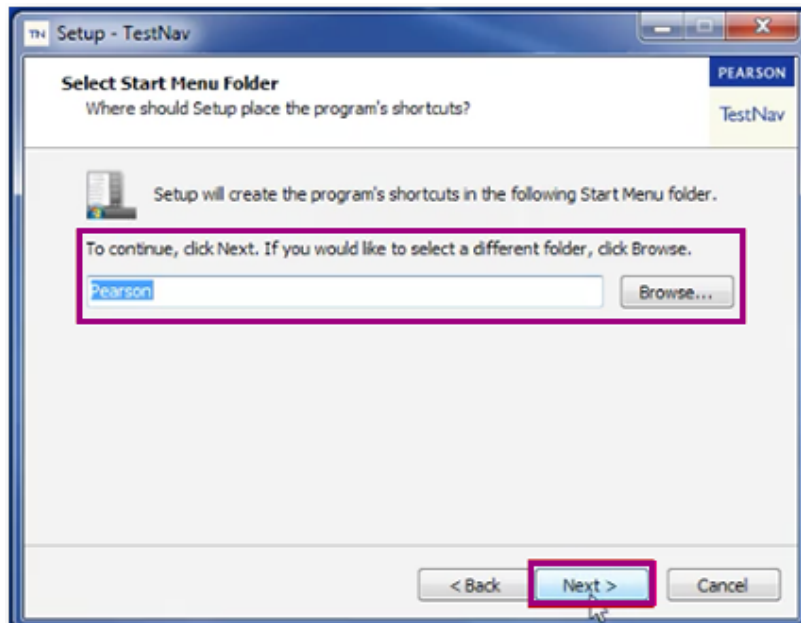
5

The **Select Destination Location** window appears. By default, TestNav program files save in **C:\Program Files (x86)\TestNav**. You can keep the default setting, or click **Browse** to choose another location. Then, click **Next**.



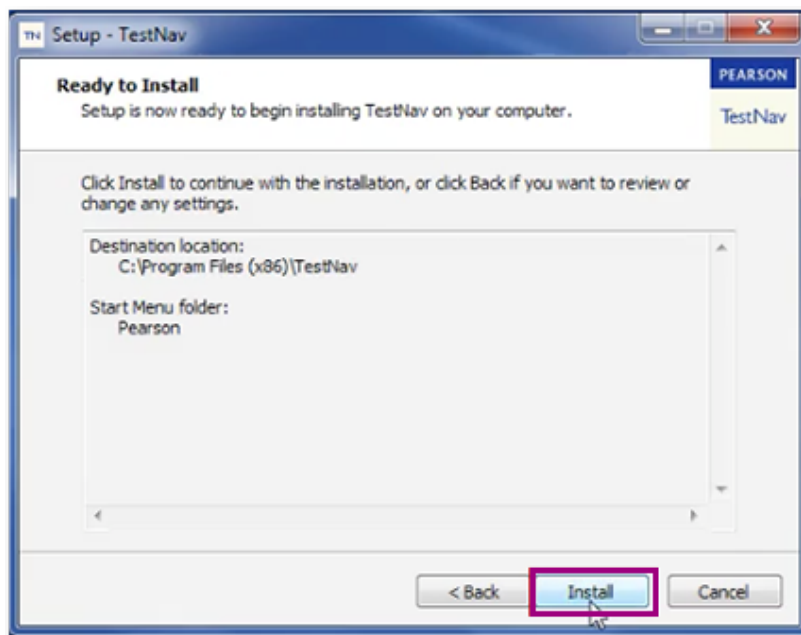
6

The **Select Start Menu Folder** window appears. By default, the setup wizard stores program shortcuts in a **Pearson** folder in the **Start** menu folder. You can keep the default setting, or click **Browse** to choose another location. Then, click **Next**.



7

Click **Install**.



8

By default, the **Launch TestNav** checkbox is selected. If you do not want to immediately launch TestNav, deselect the checkbox, and then click **Finish**.

9

Steps may vary, depending on your OS version.

Cortana

- Click **Start**, search for **Edit group policy**, and open it.
- Navigate to **Computer Configuration > Administrative Templates > Windows Components > Search**.
- Find **Allow Cortana**, and double-click to open it.
- Click **Disabled**, and then hit **OK**.

XBox Game Bar

- Right-click **Start**.
- Click **Settings**.
- Click **Gaming**.
- Click **Game Bar**.
- Click the switch below **Record game clips**.

Clipboard history

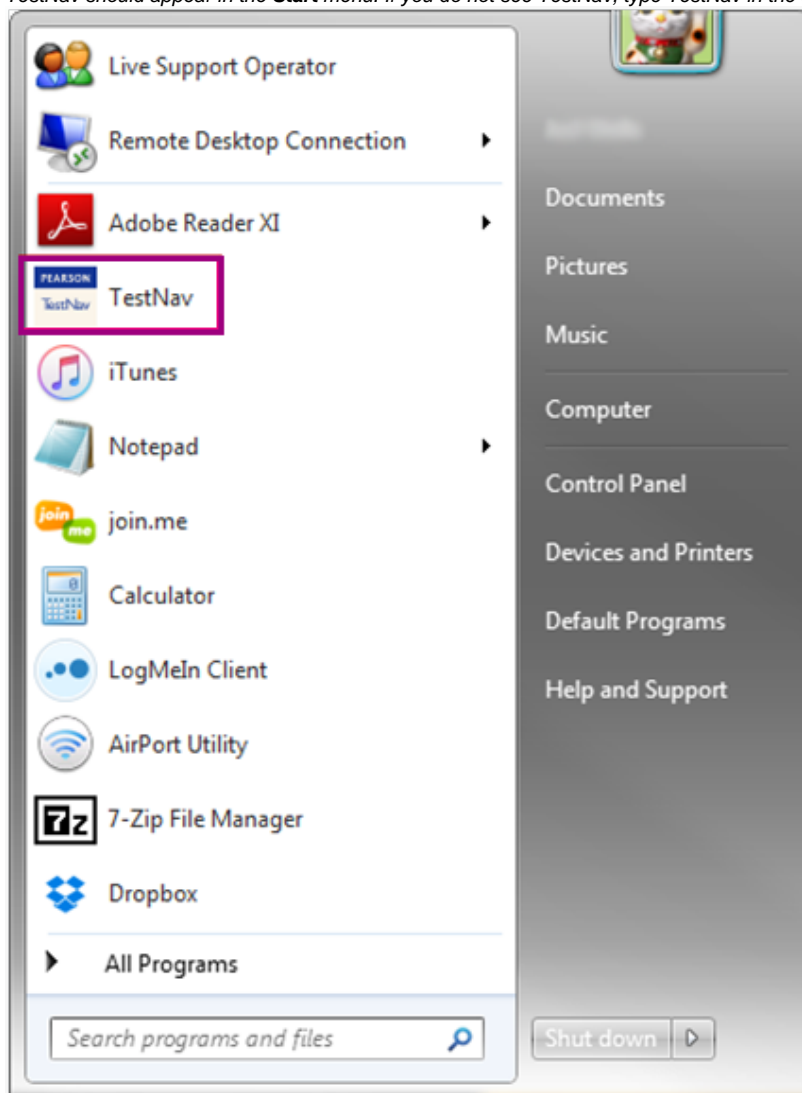
- Open Settings.
- Click on System.
- Click on **Clipboard**.
- Turn off the Save multiple items toggle switch.

Sign in to TestNav

1

From the **Start** menu, click **TestNav**.

*TestNav should appear in the **Start** menu. If you do not see TestNav, type TestNav in the search box.*



2

Click a button on the **TestNav** home page, as directed by the proctor.



3

Have the student enter the **Username** and **Password**, and click **Sign In**.

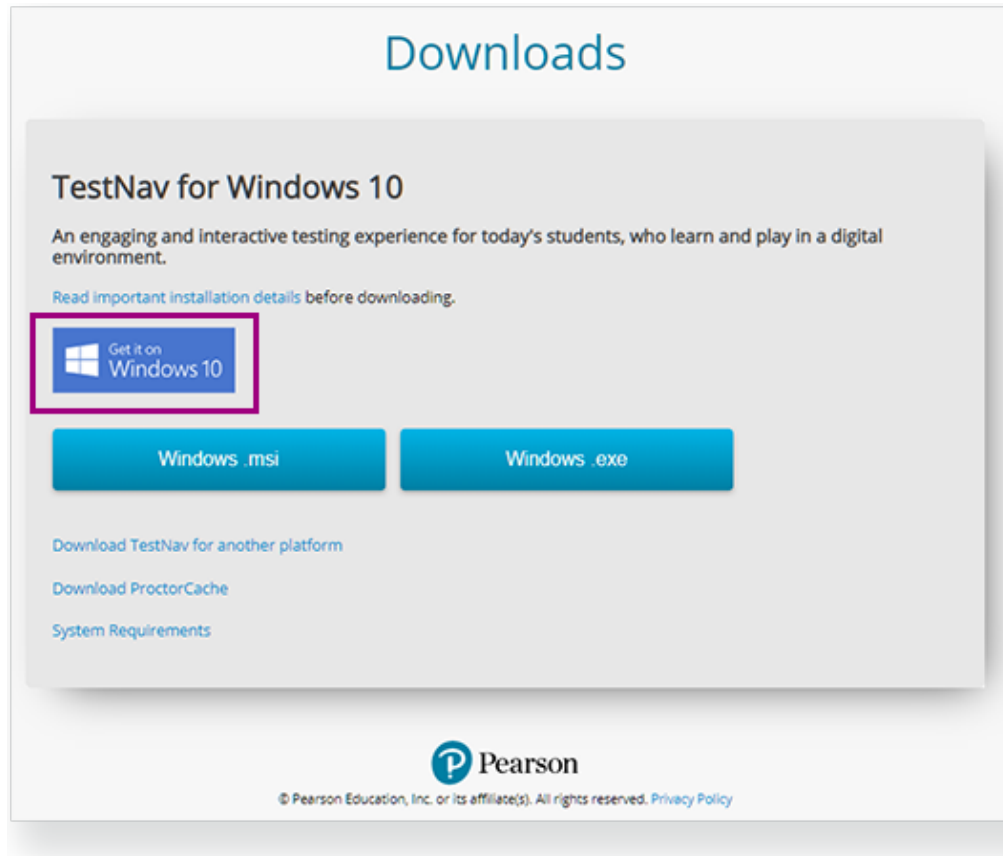
The login page for the Sample District Test on TestNav. It features the TestNav logo and the title "Sample District Test". Below the title are two input fields: "Username" and "Password". The "Password" field has a toggle icon (an eye) to the right of it. Below the input fields is a large blue button labeled "Sign In". At the bottom of the page, there is a small icon of a speaker and the text "Test Audio".

Windows 10 (from Windows Store)

Install TestNav

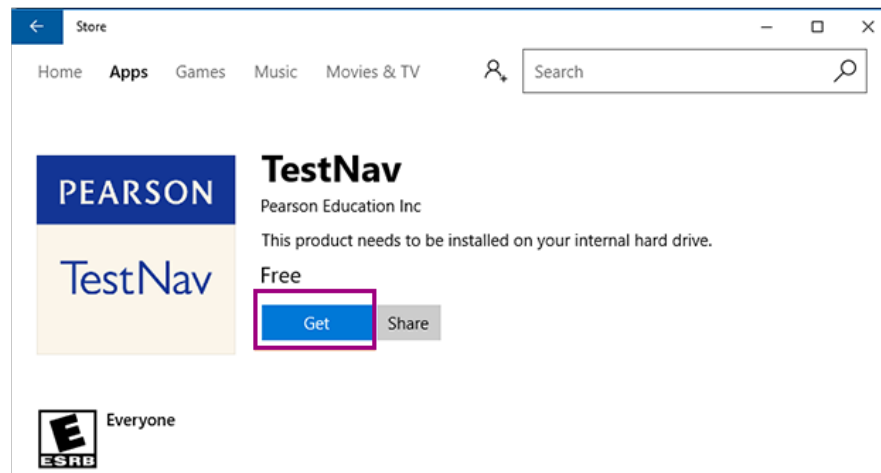
1

Click the Windows Store icon () or **Windows 10** button from [TestNav Downloads](#) page.



2

Click the search icon, and type TestNav. Click **Get** (or **Install**, if you previously downloaded TestNav on the same device.)

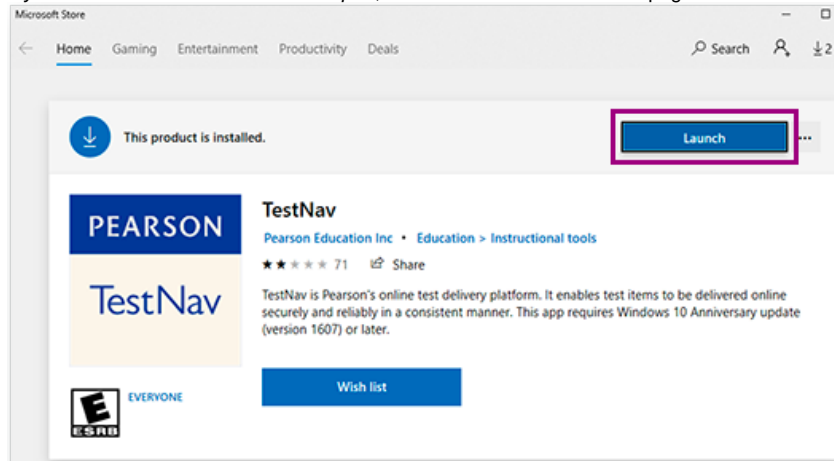


Sign in to TestNav

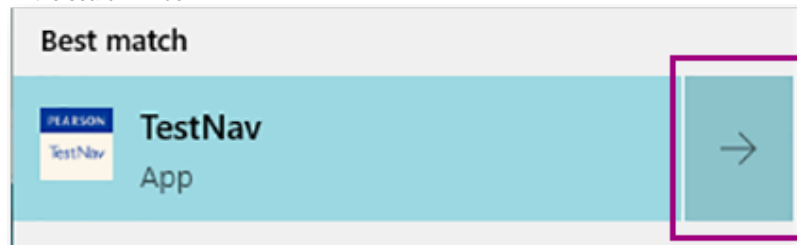
1

Open TestNav, using one of the following:

- If you still have the **Microsoft Store** open, click **Launch** on the TestNav page.



- If you do not have the store open, click the **Start Button** (Windows logo icon), type **TestNav** in the search field, and click **TestNav App** in the search window.



2

Click a button on the **TestNav** home page, as directed by the proctor.



3

Have the student enter the **Username** and **Password**, and click **Sign In**.

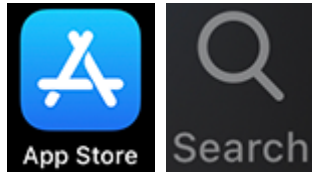
The login page for the Sample District Test on TestNav. It features the TestNav logo and the title "Sample District Test". Below the title are two input fields: "Username" and "Password". The "Password" field has a toggle icon (an eye) to the right of it. Below the input fields is a large blue button labeled "Sign In". At the bottom of the page, there is a small icon of a speaker and the text "Test Audio".

iPad (iPadOS)

Install TestNav

1

Tap the **App Store** icon, and then, the **Search** icon.



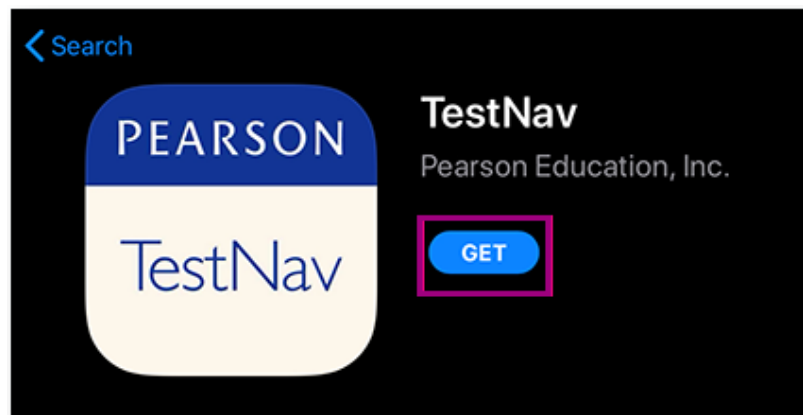
2

Type TestNav in the search field and click **Search**.



3

Click **Get**, and TestNav installs (*typically as the last app on your home pages*).



Sign in to TestNav

1

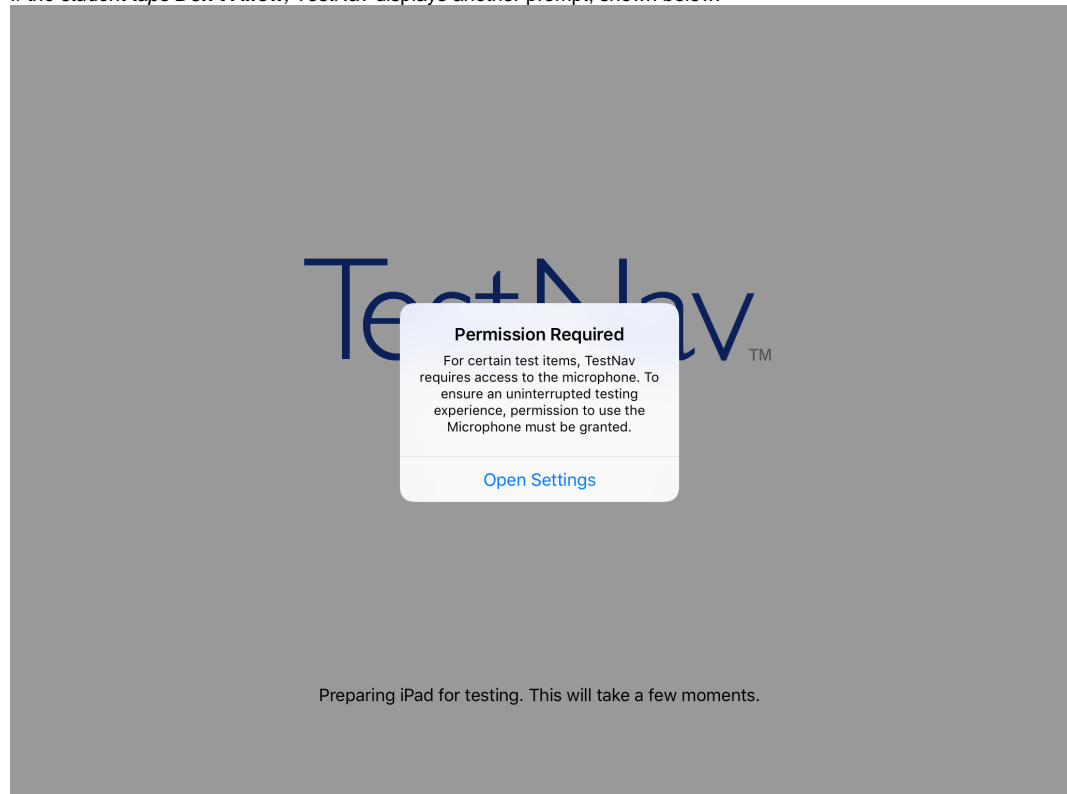
Tap the **TestNav** icon to start the app.

*The first time TestNav is launched, it displays the **Enable Microphone Permission** message.*

2

Tap **OK** to grant microphone permission.

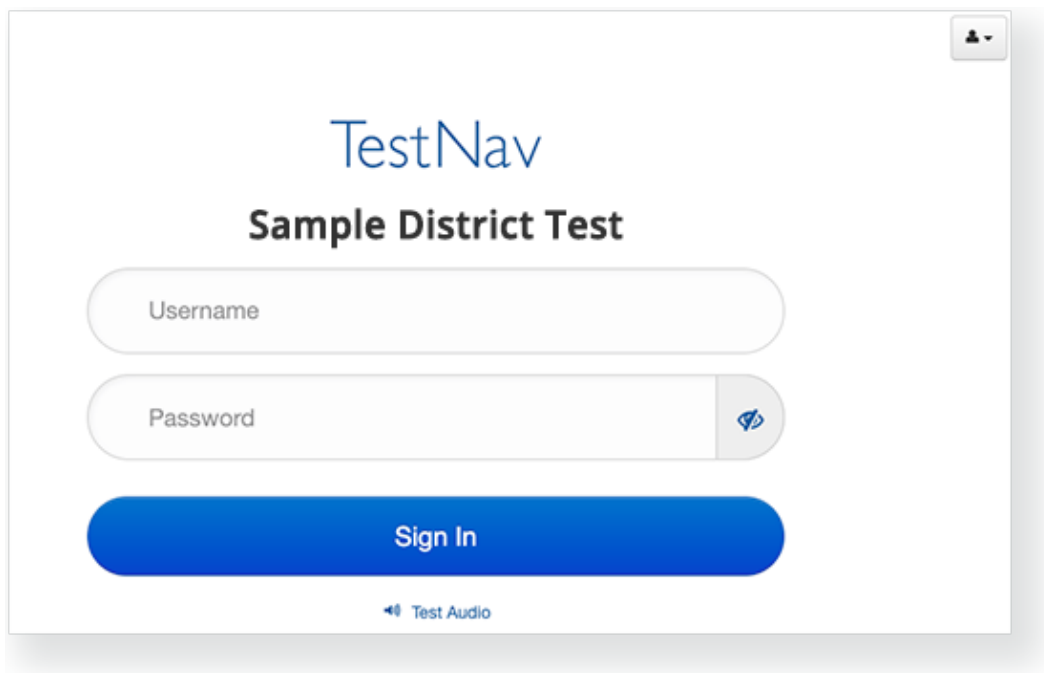
- If the student taps **Don't Allow**, TestNav displays another prompt, shown below:



- Tap **Open Settings** to enable the microphone.

3

Have the student enter the **Username** and **Password**, and click **Sign In**.



Chromebook

Install TestNav

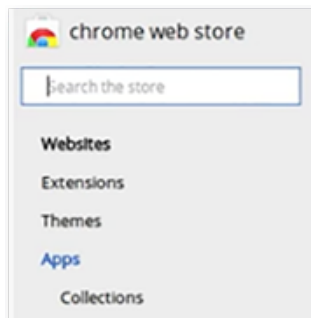
1

On your Chromebook, click the **Store** icon. (*not Google Play*)



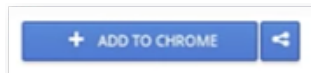
2

In the **Search the Store** field, type **TestNav**.



3

Click the TestNav app, and click **+ Add to Chrome**.



4

In the **Confirm New App** popup, click **Add**.

Sign in to TestNav

1

Start TestNav using one of the following:

*If you are still in the **Store**, you can click the **TestNav** app, and then, click **Launch App**.*



*If you closed the **Store**, you can click **Apps** in the lower-left of the screen, and then, click **TestNav**.*

2

Click a button on the **TestNav** home page, as directed by your proctor.



3

Have the student enter the **Username** and **Password**, and click **Sign In**.

The login page for the Sample District Test on TestNav. It features the TestNav logo and the title "Sample District Test". Below the title are two input fields: "Username" and "Password". The "Password" field has a toggle icon for visibility. A large blue "Sign In" button is positioned below the input fields. At the bottom, there is a small speaker icon and the text "Test Audio".

Tiny link: <https://support.assessment.pearson.com/x/WSH1AQ>